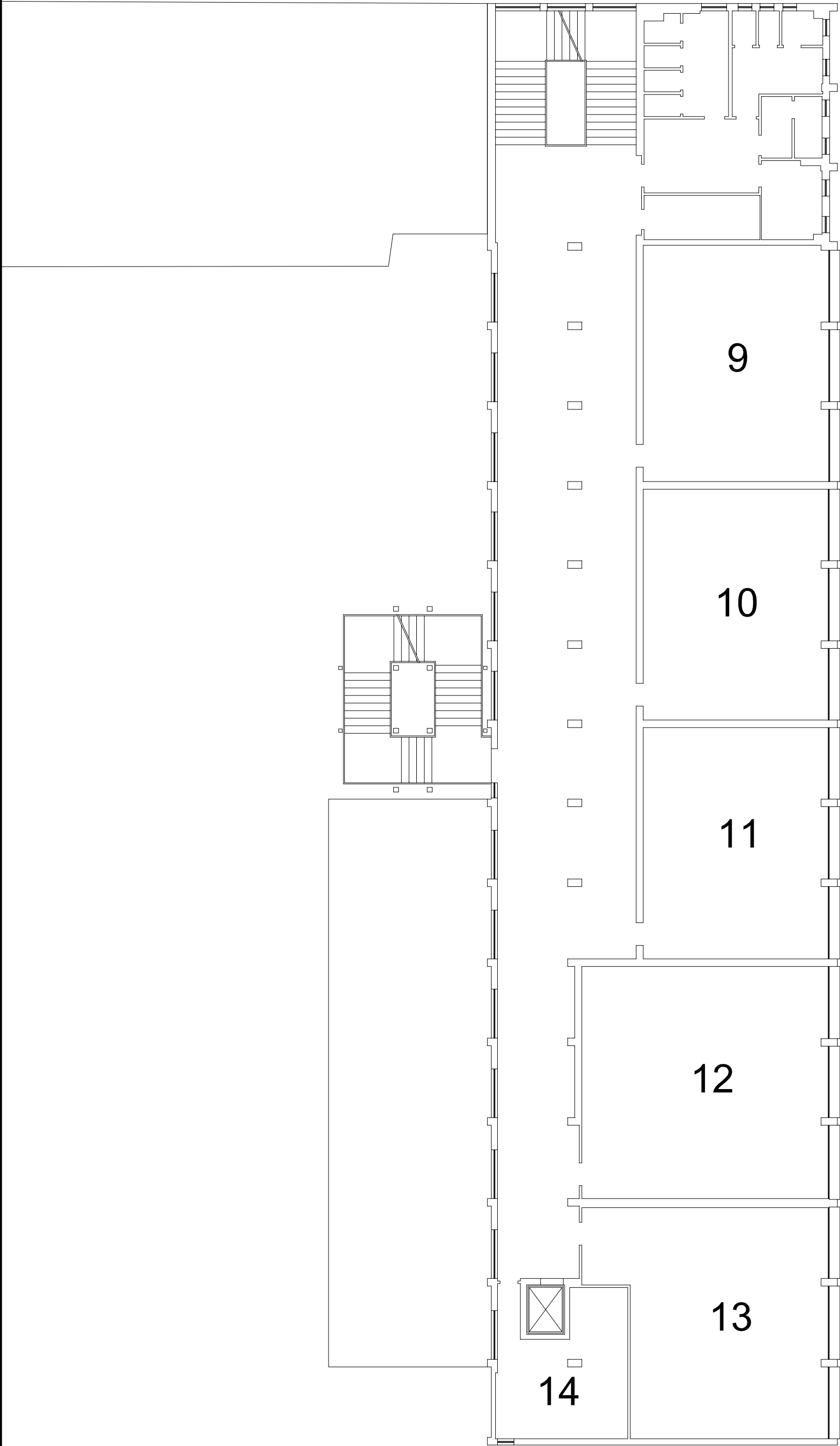
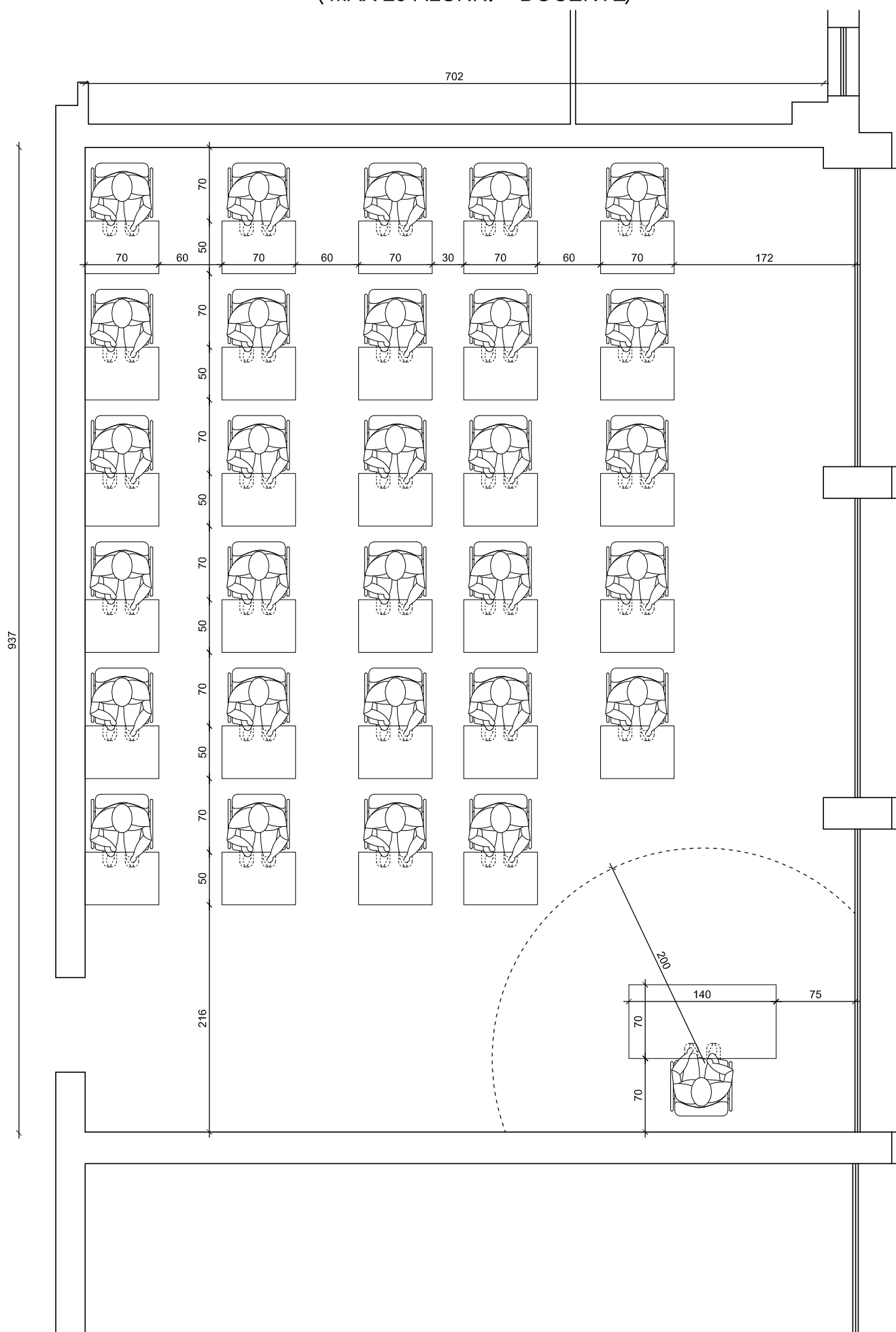


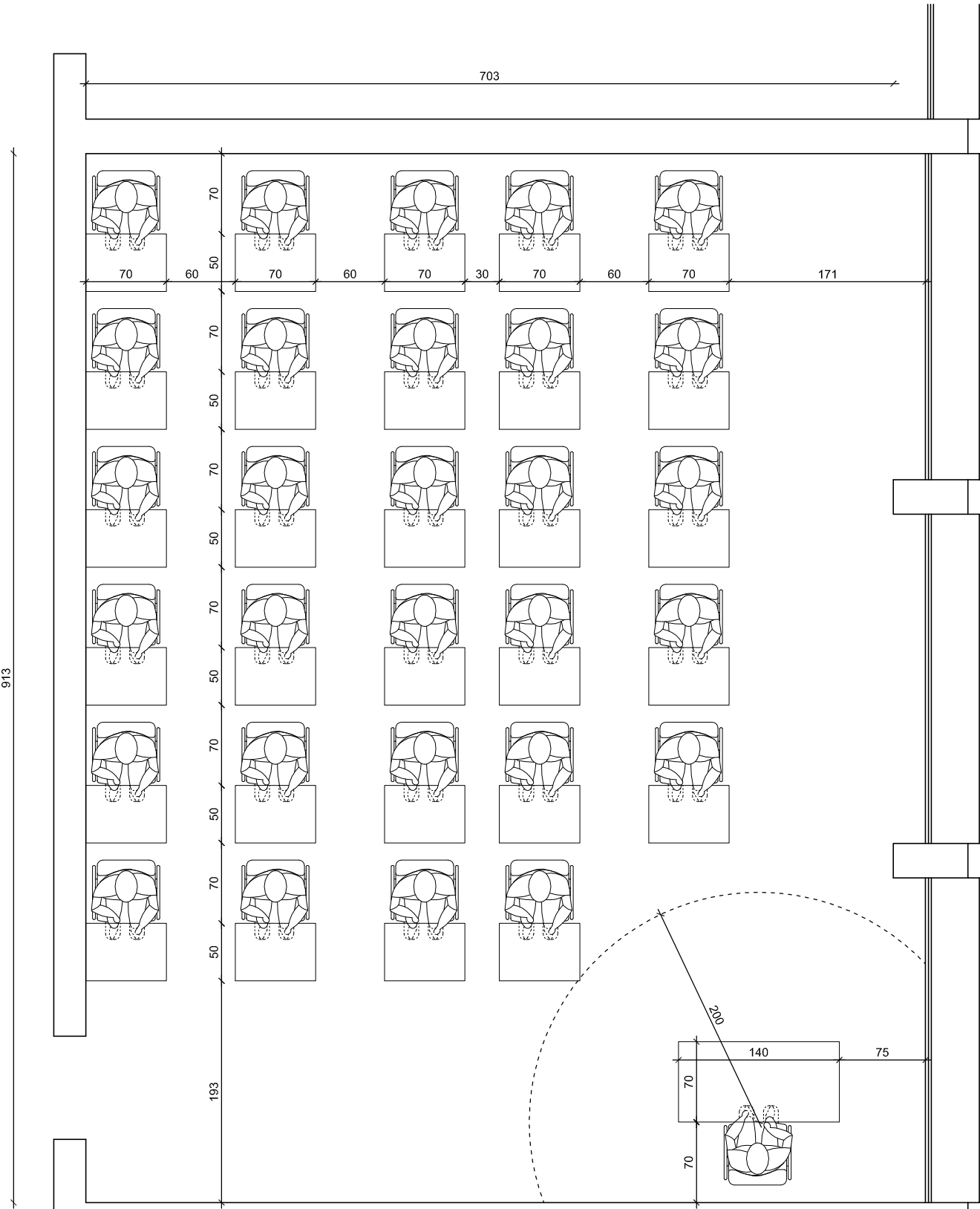
SCUOLA MEDIA - Sede Nelson Mandela
RIEPILOGO AULE PIANO PRIMO



SCUOLA MEDIA - Sede Nelson Mandela
AULA 9 - PIANO PRIMO
(MAX 29 ALUNNI + DOCENTE)



SCUOLA MEDIA - Sede Nelson Mandela
AULA 10 - PIANO PRIMO
(MAX 29 ALUNNI + DOCENTE)



Technical floor plan of a classroom showing seating arrangement, dimensions, and door location.

Dimensions:

- Overall width: 704
- Overall depth: 194
- Row spacing: 70 (between rows), 50 (between desks)
- Column spacing: 70, 60, 70, 30, 70, 60, 70, 172
- Door swing radius: 200
- Door width: 75
- Door height: 70
- Door offset: 140

Seating Arrangement:

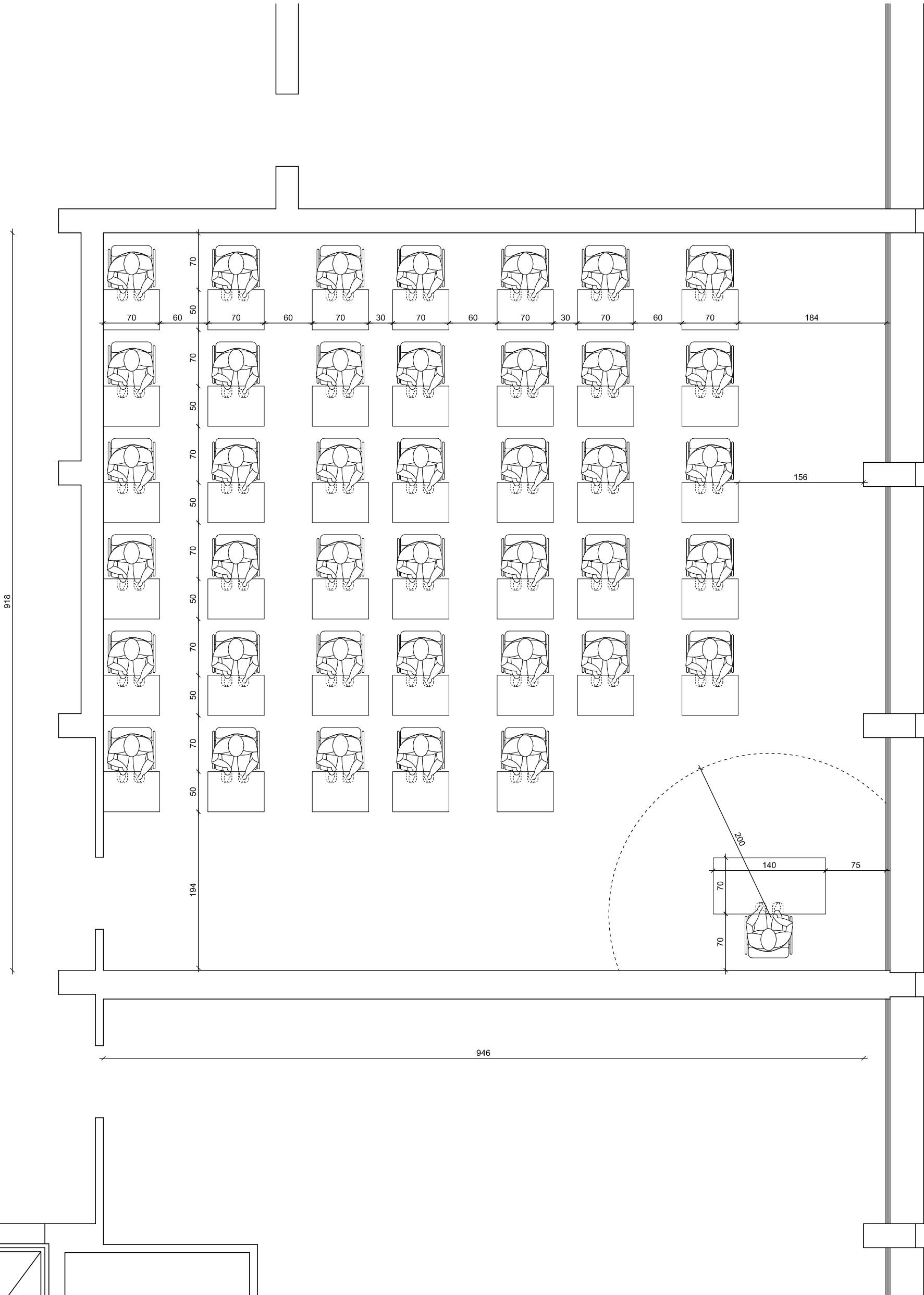
- 5 rows of 5 seats each (25 seats total).
- Each seat is represented by a stylized icon of a person sitting at a desk.
- The seating area is defined by a dashed line.

Door Location:

- Located on the right wall.
- Swing radius of 200.
- Width of 75 and height of 70.
- Offset of 140 from the wall.

SCUOLA MEDIA - Sede Nelson Mandela
AULA 12 - PIANO PRIMO
(MAX 40 ALUNNI + DOCENTE)

N.B.: IMPOSSIBILE FARE DI PIU',
SERVIREBBERO 2 PORTE



SCUOLA MEDIA - Sede Nelson Mandela
AULE 13 e 14 - PIANO PRIMO
(AULA 13: MAX 34 ALUNNI + DOCENTE
AULA 14: MAX 8 ALUNNI + DOCENTE)

